

TEC 30 medical



DESCRIPTION

The **TEC 30 Medical** is designed for the automatic bagging of various types of solid products, in medium or large series. Compact and versatile, it is available in the following versions :

- **Inclined**, to slow down the fall of the products
- **Vertical**, for a gain in speed.
- **Horizontal**, with an assisted introduction system to keep the orientation of the parts, ideal for fragile products.

INNOVATIVE

Human/machine touch interface oriented **Industry 4.0**, with optional **21 CFR Part 11** compatibility to :

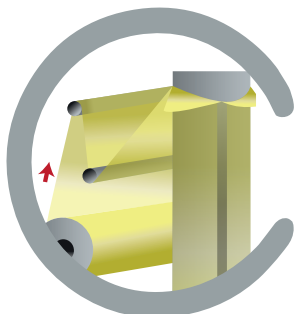
- *Maintain*
- *Visualize / Report*
- *Exploit / Inform*



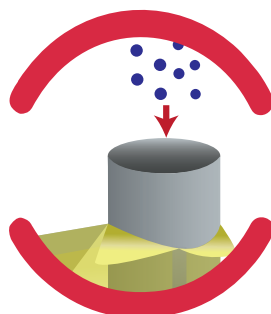
FUNCTIONING

The **TEC 30 Medical** operates from a voltage-regulated flat film reel.

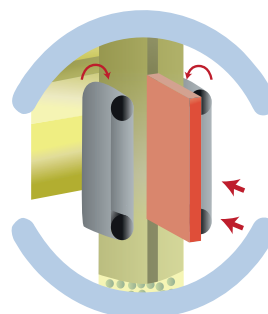
- 1** *The film is conformed around a tube, called "conformer"*
- 2** *The parts are introduced into the conformator in manual or automatic mode*
- 3** *The longitudinal sealing unit makes a back seal in the middle of the bag*
- 4** *The cross-sealing unit seals the bottom and top of the bags simultaneously and separates them*



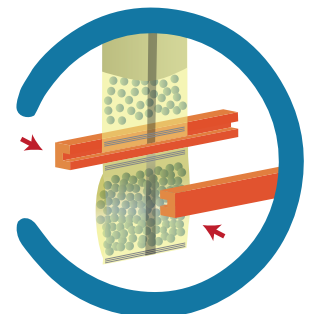
The conformer forms the bag in its width



This principle avoids any risk of loss of parts



Formation of the bag in its length



PERFORMANCE

- Low loading height
- Easy to move, machine mounted on wheels
- Programmable controller
- "BRUSHLESS" motorization
- Touch screen and color man-machine interface
- Production counter
- Thermal welding with dynamic control of each weld for quality feedback of the finished product
 - Double or wide weld from 3 to 8 mm
- Cylindrical, oval, square or rectangular conformer
- Motorized quick release coil holder
- Marking in real time according to the length of the bag



OPTIONS & ACCESSORIES

- Identification by direct printing on thermal transfer film and/or application of labels
- Heavy parts receiving flap
- Horizontal and inclined version to protect fragile products
- Cell for pre-printed film
- Bag vibrator to standardize the parts
- Monobloc conformator
- **21 CFR Part 11** compliant machine



Possible synchronization with other devices :

- Robot
- Conveyor belt for product supply
- Automatic counting machine
- Linear or multihead weigher
- Bag weight control
- Automatic boxing



PACKING MATERIALS

- 🌿 **Biodegradable Oxo film or Biodegradable type PLA**
- 🌿 **Paper**
- PE / PP film
- Heat-sealable complex such as PP
- Neutral or pre-printed film

GREEN SOLUTIONS



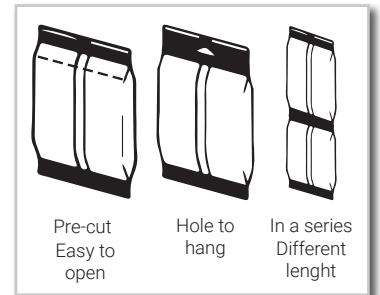
Our machines allow for 100% ecological, biosourced, recyclable and biodegradable plastics or paper sleeves.

BAG SHAPES

SYMETRICAL CUSHION BAG



OPTIONAL



TECHNICAL CHARACTERISTICS

		TEC 30 (Thermal welding)
Maximum Speed		Up to 40 bags/min (Depending on film type, quality, thickness ...)
Bag weight		Up to 1000 grams (Higher weight with receiving flap)
Bag size	Width	70 to 235 mm
	Length	60 to 280 mm
	Head opening	100 mm
Coil size		Diameter : 320 mm
Packing materials		Complex or thermowelding material
		Thickness : 10 to 50µ
Power supply		220 V single-phase 50hz / 6 bars
Machine weight		About 400 kg

