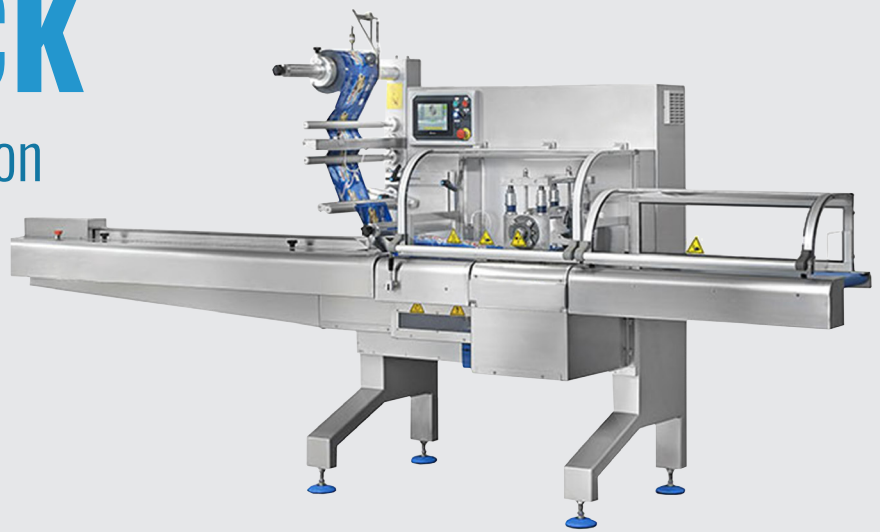


# FLOWPACK

Our horizontal solution



## DESCRIPTION

Our horizontal solution “**Flowpack**” is designed for the automatic bagging of products in large series, at high speed, up to 400 bags per minute.

It is available in different versions, depending on your bagging needs, and operates continuously.

### Available specifications :

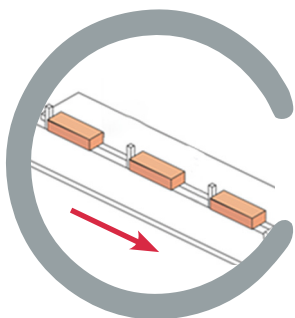
- High or low film spool
- Intermittent or accompanying head known as “box motion”
- U-shaped rotating jaws for high product
- Multi-sector rotary jaws for high speed

MADE  
IN FRANCE

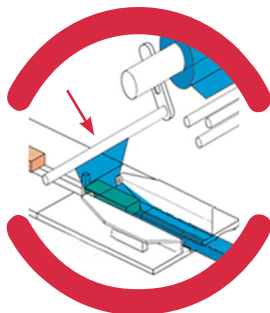


## FUNCTIONING

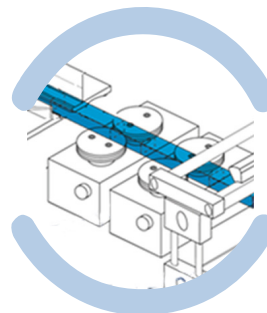
**1** The products are pushed by a chain with or by a conveyor belt



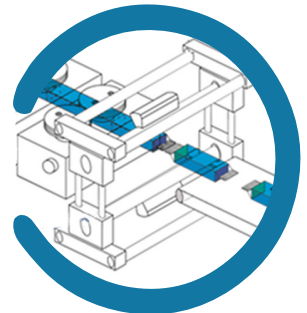
**2** They are transported to the “conformer”, which will shape the film around the product



**3** The film is pulled by rollers which make it possible to carry out the longitudinal welding



**4** The cross-sealing unit seals the bag at both ends simultaneously and separates them

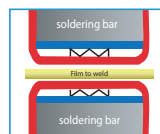


Production of a tight bag, the product is then transported by the traction of the film

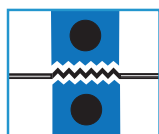


## PERFORMANCE

- ⇒ Programmable controller
- ⇒ Touch screen and color man-machine interface
- ⇒ Two welding technologies



**Impulse welding**  
Jaws equipped with welding wires



**Thermal welding**  
Grooved and heated jaws

- ⇒ Adjustable or fixed conformator
- ⇒ Drive by independent motorization called "Brushless"
- ⇒ Welding close to the product for high production rates

## OPTIONS & ACCESSORIES

- ⇒ Identification by direct printing on thermal transfer film and/or application of labels
- ⇒ Cell for pre-printed film
- ⇒ Double spool holder
- ⇒ Gas injection for modified atmosphere conditioning
- ⇒ Automatic product alignment, synchronization of up to 5 belts

### Possible synchronization with other devices :

- Loading by robot
- Checkweigher
- Metal detector



## PACKING MATERIALS

- 🌱 Biodegradable Oxo film or Biodegradable type PLA
- 🌱 Paper
- ⇒ PE film
- ⇒ Heat-sealable complex such as PP
- ⇒ Neutral or pre-printed film

### GREEN SOLUTIONS



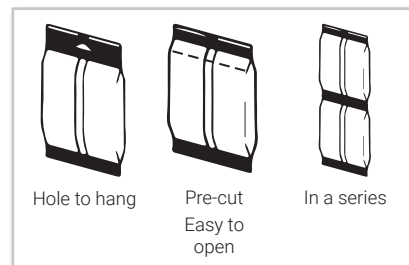
Our machines allow for 100% ecological, biosourced, recyclable and biodegradable plastics or paper sleeves.

## BAG SHAPES

### SYMETRICAL CUSHION BAG



### OPTIONAL



## TECHNICAL CHARACTERISTICS

	TEC 115-500	TEC 116-500	TEC 120-500	TEC 130-600	TEC 145-500
<b>Maximum Speed</b> <i>(depending on the type of film, quality, thickness, etc.)</i>	120 bags/minute	120 bags/minute	60 to 120 bags/minute <i>(According to jaws)</i>	60 bags/minute	400 bags/minute
<b>Number of pairs of knurls</b>	2	3	2 + 1	3 + 1	3 + 1
<b>Film width</b>	500 mm Complex thermo-welding	500 mm Complex thermo-welding	500 mm Complex thermo-welding or PE	500 mm Complex thermo-welding or PE	500 mm Complex thermo-welding
<b>Jaw type</b>	Rotary	Rotary	Rotary or intermittent	Box-motion	Rotary up to 6 welding jaws
<b>Coil loading</b>	High	High	Low	High	High